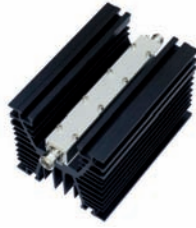


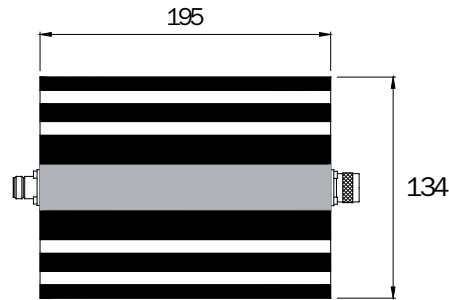
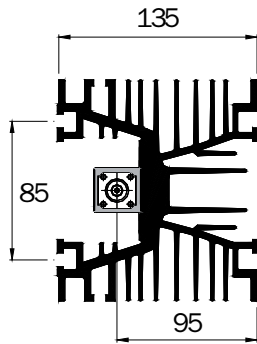
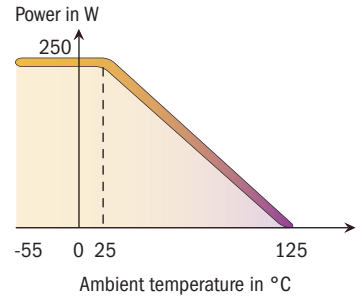
250 W 6 GHz



Standards
NF C 96-315
MIL-DTL-3933



Impedance	50 Ω ± 5%
Frequency	DC - 6 GHz
Max VSWR	≤ 1.20 at 3 GHz, ≤ 1.30 at 6 GHz
Temperature range	-55 to +125°C
Average power @ 25°C	250 W
Weight	3.2 kg



Dimensions in mm

Attenuation (dB)	P/N (N m/f)	Accuracy ±Δα (dB)
3	16-0631	0.75
6	16-0632	0.75
10	16-0633	1
20	16-0634	1
30	16-0635	1
40	16-0636	1
50	16-6855	1.5

Option	Pulse applications 5kV peak
---------------	-----------------------------

Others attenuations on request