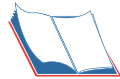
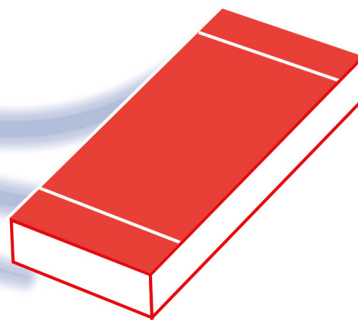


SMD & CHIPS RESISTORS



=> Search by Part Number

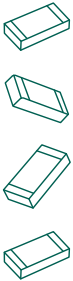
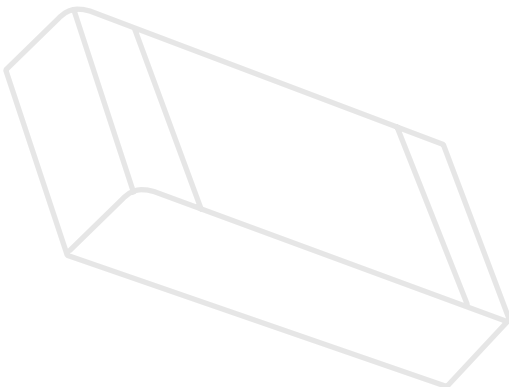
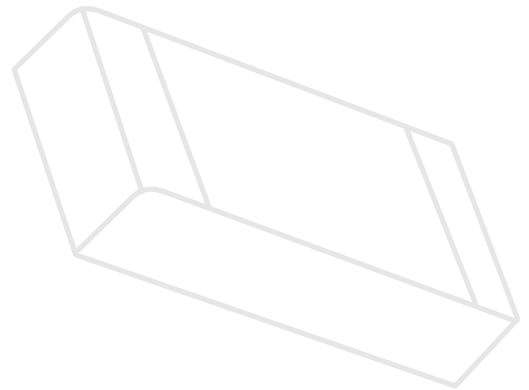


Summary

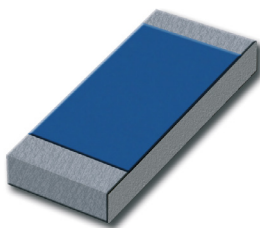
For Power Amplifiers & Dividers

- ⇒ Easy Soldering on PCB
- ⇒ Size 1206 & 2010
- ⇒ 3 to 20 W
- ⇒ Up to 4 GHz

| | |
|-----------------------|----|
| Summary | 2 |
| 3 W 6 GHz AlN SMD | 3 |
| 10 W 4 GHz AlN SMD | 4 |
| 20 W 4 GHz BeO SMD | 5 |
| 20 W 4 GHz BeO SMD | 6 |
| 20 W 4 GHz BeO Chip | 7 |
| Search by Part Number | 8 |
| Notes | 9 |
| Notes | 10 |
| Notes | 11 |



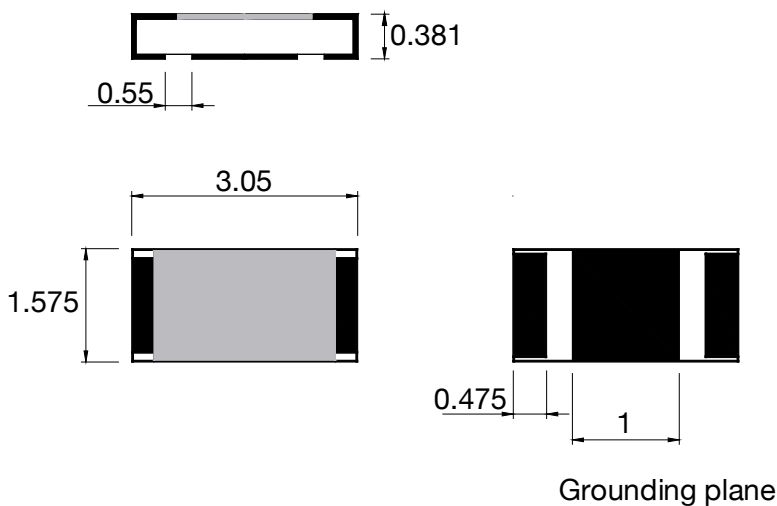
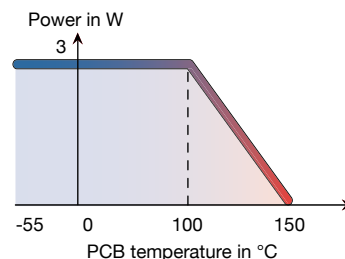
3 W 6 GHz AIN SMD



Standards
NF C 96-315
MIL-DTL-39030

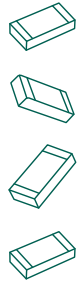


| | |
|-------------------|-------------------------|
| Substrate | AlN |
| Resistive film | Thick film |
| Protection film | Epoxy |
| Contacts finition | Tin over Nickel barrier |
| Size | 1206 |



Dimensions in mm

SMD & Chips Resistors



Return to Search by Part Number

| P/N | Frequency (GHz) | Power (W) | Resistance* ($\Omega \pm 5\%$) | Capacitance** C_o (pF) |
|----------|-----------------|-----------|----------------------------------|--------------------------|
| 45-0173S | 6 | 3 | 12 | 0.6 |
| 45-0174S | 6 | 3 | 90 | 0.6 |
| 45-0175S | 6 | 3 | 250 | 0.6 |

| mm | inch |
|-------|-------|
| 0.381 | 0.015 |
| 0.475 | 0.018 |
| 0.55 | 0.022 |
| 1 | 0.039 |
| 1.575 | 0.062 |
| 3.05 | 0.120 |

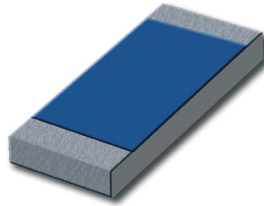
* Others values on request
 ** C_o is the value of capacitance measured in DC.
 C_{HF} is the RF equivalent capacitance measured with NWA with one port grounded $C_{HF} = 1/3 C_o$

Available on Tap and Reel Packaging

10 W 4 GHz AIN SMD

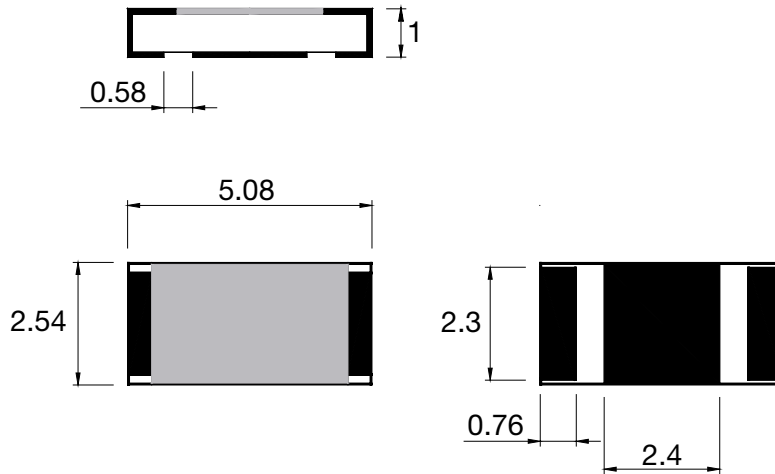
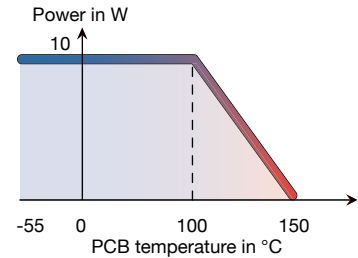


Standards
NF C 96-315
MIL-DTL-39030



SMD & Chips Resistors

| | |
|-------------------|-------------------------|
| Substrate | AlN |
| Resistive film | Thick film |
| Protection film | Epoxy |
| Contacts finition | Tin over Nickel barrier |
| Size | 2010 |



Grounding plane

Dimensions in mm

[Return to Search by Part Number](#)

| P/N | Frequency (GHz) | Power (W) | Resistance* ($\Omega \pm 5\%$) | Capacitance** (C_0 (pF)) |
|----------|-----------------|-----------|----------------------------------|-----------------------------|
| 45-0167S | 4 | 10 | 10 | 0.75 |
| 45-0168S | 4 | 10 | 15 | 0.75 |
| 45-0105S | 4 | 10 | 33 | 0.75 |
| 45-0068S | 4 | 10 | 100 | 0.75 |
| 45-0099S | 4 | 10 | 200 | 0.75 |
| 45-0140S | 4 | 10 | 320 | 0.75 |
| 45-0100S | 4 | 10 | 400 | 0.75 |

| mm | inch |
|------|-------|
| 0.58 | 0.023 |
| 0.76 | 0.030 |
| 1 | 0.039 |
| 2.3 | 0.090 |
| 2.4 | 0.095 |
| 2.54 | 0.100 |
| 5.08 | 0.200 |

* Others values on request

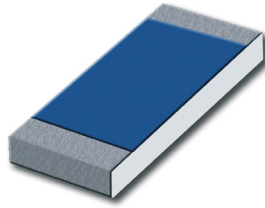
** C_0 is the value of capacitance measured in DC.

CHF is the RF equivalent capacitance measured with NWA with one port grounded CHF = 1/3 C_0



Available on Tap and Reel Packaging

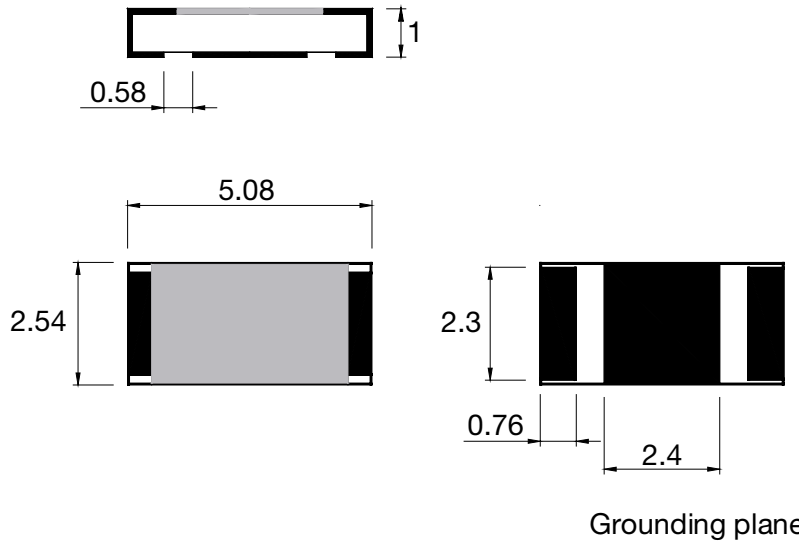
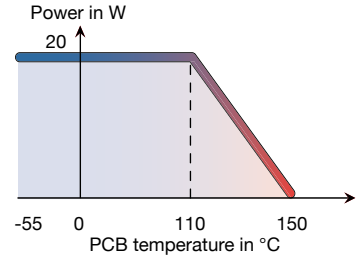
20 W 4 GHz BeO SMD



Standards
NF C 96-315
MIL-DTL-39030

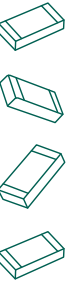


| | |
|-------------------|------------|
| Substrate | BeO |
| Resistive film | Thick film |
| Protection film | Epoxy |
| Contacts finition | PtAg |
| Size | 2010 |



Dimensions in mm

SMD & Chips Resistors



Return to Search by Part Number

| P/N | Frequency (GHz) | Power (W) | Resistance* ($\Omega \pm 5\%$) | Capacitance** C_0 (pF) |
|---------|-----------------|-----------|----------------------------------|--------------------------|
| 43-0337 | 4 | 20 | 10 | 0.75 |
| 43-0346 | 4 | 20 | 50 | 0.75 |
| 43-0154 | 4 | 20 | 100 | 0.75 |
| 43-0338 | 4 | 20 | 150 | 0.75 |
| 43-0322 | 4 | 20 | 200 | 0.75 |
| 43-0335 | 4 | 20 | 290 | 0.75 |
| 43-0323 | 4 | 20 | 400 | 0.75 |

| mm | inch |
|------|-------|
| 0.58 | 0.023 |
| 0.76 | 0.030 |
| 1 | 0.039 |
| 2.3 | 0.090 |
| 2.4 | 0.095 |
| 2.54 | 0.100 |
| 5.08 | 0.200 |

* Others values on request

** C_0 is the value of capacitance measured in DC.

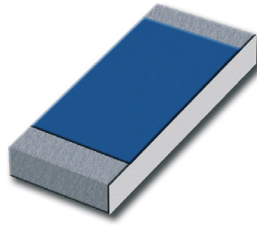
C_{HF} is the RF equivalent capacitance measured with NWA with one port grounded $C_{HF} = 1/3 C_0$

Available on Tap and Reel Packaging

20 W 4 GHz BeO SMD

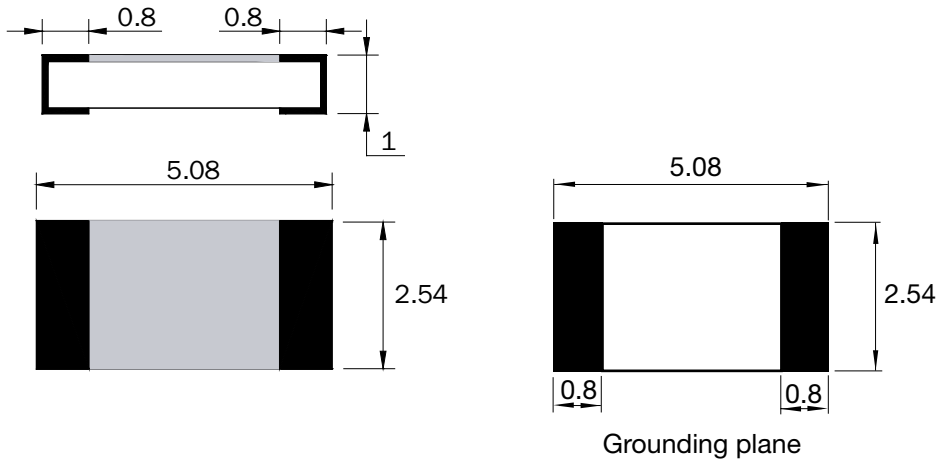
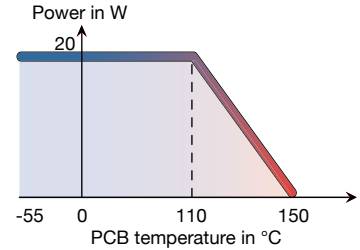


Standards
NF C 96-315
MIL-DTL-39030



SMD & Chips Resistors

| | |
|-------------------|------------|
| Substrate | BeO |
| Resistive film | Thick film |
| Protection film | Epoxy |
| Contacts finition | PtAg |
| Size | 2010 |



Dimensions in mm

[Return to Search by Part Number](#)

| P/N | Frequency (GHz) | Power (W) | Resistance* ($\Omega \pm 5\%$) | Capacitance** C_0 (pF) |
|---------|-----------------|-----------|----------------------------------|-----------------------------|
| 43-0285 | 4 | 20 | 15 | 0.75 |
| 43-0286 | 4 | 20 | 33 | 0.75 |
| 43-0003 | 4 | 20 | 50 | 0.75 |
| 43-0241 | 4 | 20 | 71 | 0.75 |
| 40-0275 | 4 | 20 | 82 | 0.75 |
| 40-0270 | 4 | 20 | 100 | 0.75 |
| 43-0071 | 4 | 20 | 200 | 0.75 |
| 43-0232 | 4 | 20 | 240 | 0.75 |
| 40-0333 | 4 | 20 | 275 | 0.75 |
| 43-0072 | 4 | 20 | 300 | 0.75 |
| 40-0268 | 4 | 20 | 390 | 0.75 |
| 43-0073 | 4 | 20 | 400 | 0.75 |
| 40-0269 | 4 | 20 | 560 | 0.75 |
| 43-0300 | 4 | 20 | 1000 | 0.75 |

| mm | inch |
|------|-------|
| 0.8 | 0.031 |
| 1 | 0.039 |
| 2.54 | 0.100 |
| 5.08 | 0.200 |

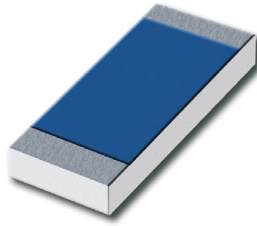
* Others values on request

** C_0 is the value of capacitance measured in DC.

C_{HF} is the RF equivalent capacitance measured with NWA with one port grounded $C_{HF} = 1/3 C_0$

Available on Tap and Reel Packaging

20 W 4 GHz BeO Chip

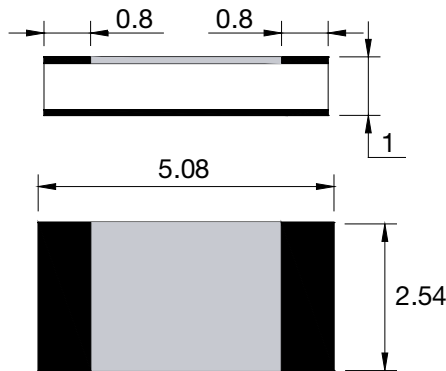
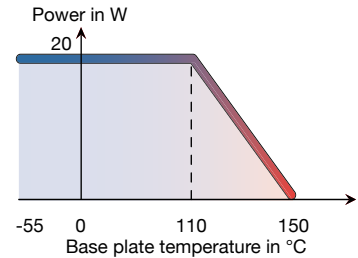


Standards
NF C 96-315
MIL-DTL-39030

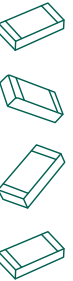


SMD & Chips Resistors

| | |
|-------------------|------------|
| Substrate | BeO |
| Resistive film | Thick film |
| Protection film | Epoxy |
| Contacts finition | PtAg |
| Size | 2010 |



Dimensions in mm



[Return to Search by Part Number](#)

| P/N | Frequency (GHz) | Power (W) | Resistance* ($\Omega \pm 5\%$) | Capacitance** C_0 (pF) |
|---------|-----------------|-----------|----------------------------------|--------------------------|
| 43-0336 | 4 | 20 | 10 | 0.75 |
| 43-0344 | 4 | 20 | 15 | 0.75 |
| 40-0337 | 4 | 20 | 50 | 0.75 |
| 43-0345 | 4 | 20 | 100 | 0.75 |
| 40-0264 | 4 | 20 | 220 | 0.75 |

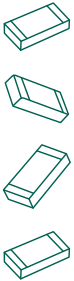
| mm | inch |
|------|-------|
| 0.8 | 0.031 |
| 1 | 0.039 |
| 2.54 | 0.100 |
| 5.08 | 0.200 |

* Others values on request
 ** C_0 is the value of capacitance measured in DC.
 C_{HF} is the RF equivalent capacitance measured with NWA with one port grounded $C_{HF} = 1/3 C_0$

Available on Tap and Reel Packaging

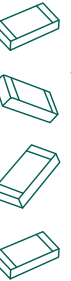
Search by Part Number

| Part Number | Page |
|--------------------------|------|
| 40-0264 | E7 |
| 40-0268 | E6 |
| 40-0269 | E6 |
| 40-0270 | E6 |
| 40-0275 | E6 |
| 40-0333 | E6 |
| 40-0337 | E7 |
| 43-0003 | E6 |
| 43-0071 | E6 |
| 43-0072 | E6 |
| 43-0073 | E6 |
| 43-0154 | E5 |
| 43-0232 | E6 |
| 43-0241 | E6 |
| 43-0285 | E6 |
| 43-0286 | E6 |
| 43-0300 | E6 |
| 43-0322 | E5 |
| 43-0323 | E5 |
| 43-0335 | E5 |
| 43-0336 | E7 |
| 43-0337 | E5 |
| 43-0338 | E5 |
| 43-0344 | E7 |
| 43-0345 | E7 |
| 43-0346 | E5 |
| 45-0068S | E4 |
| 45-0099S | E4 |
| 45-0100S | E4 |
| 45-0105S | E4 |
| 45-0140S | E4 |
| 45-0167S | E4 |
| 45-0168S | E4 |
| 45-0173S | E3 |
| 45-0174S | E3 |
| 45-0175S | E3 |



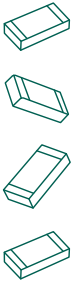


Notes



Notes

SMD & Chips Resistors





Notes

