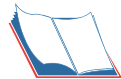
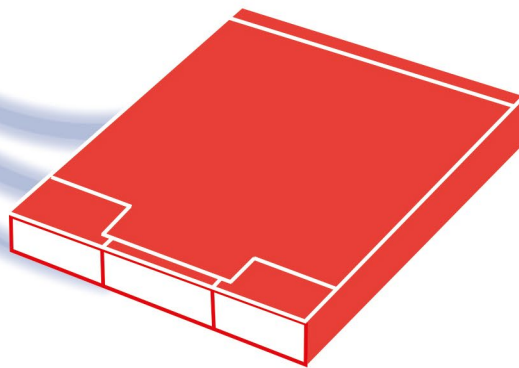


SMD ATTENUATORS



=> [Search by Part Number](#)



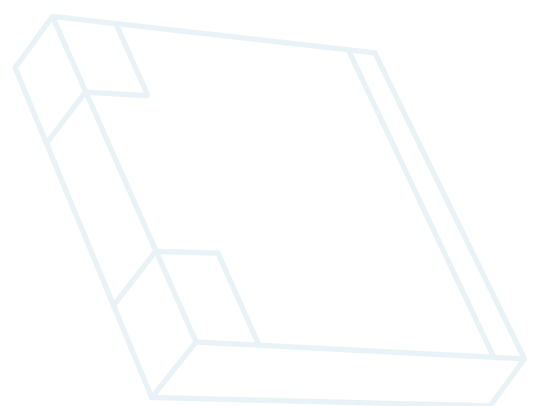
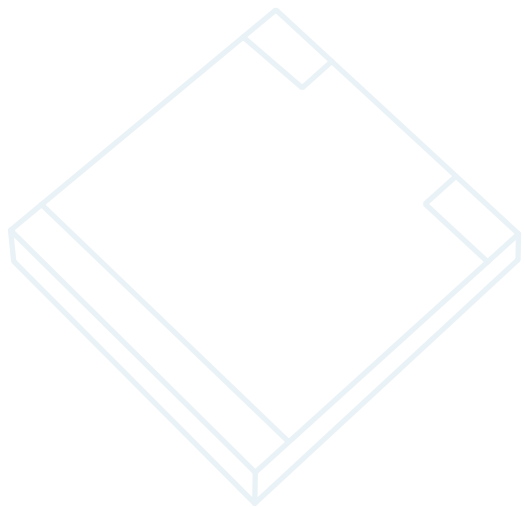
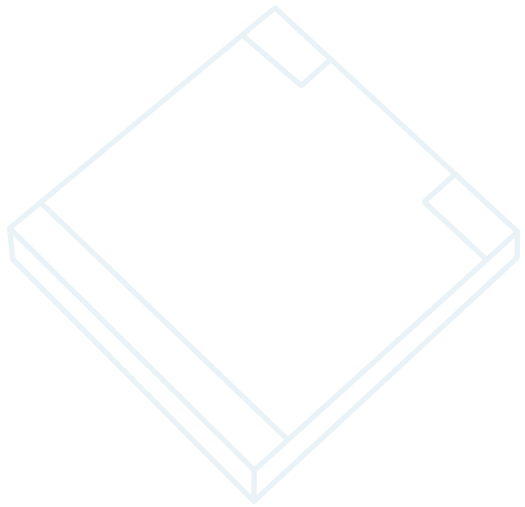
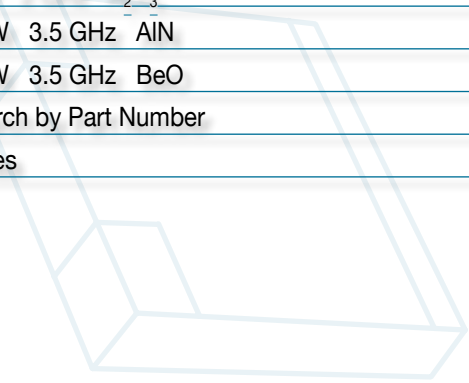


For Power Amplifiers, Couplers, Combiners & Isolators

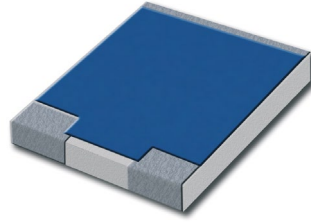
- ⇒ Easy Soldering on PCB
- ⇒ Size 2525
- ⇒ 3 to 10 W
- ⇒ Up to 3.5 GHz

SMD Attenuators

3 W 2 GHz Al ₂ O ₃	3
10 W 3.5 GHz AlN	4
10 W 3.5 GHz BeO	5
Search by Part Number	6
Notes	7



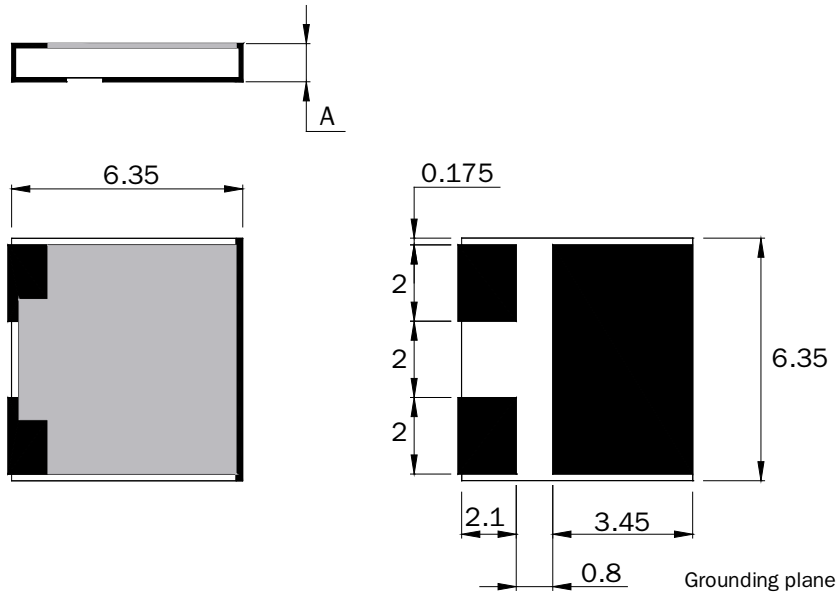
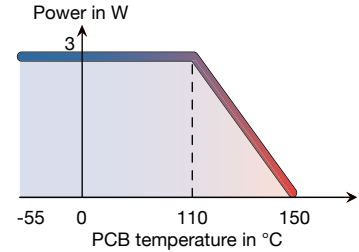
3 W 2 GHz Al_2O_3



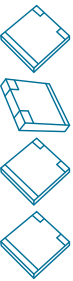
Standards
NF C 96-315
MIL-DTL-3933



Substrate	Al_2O_3
Resistive film	Thick film
Protection film	Epoxy
Contacts finition	Tin over Nickel barrier
Size	2525



SMD Attenuators



Dimensions in mm

Return to Search by Part Number

P/N	Attenuation* (dB)	Frequency (GHz)	Power (W)	Impedance ($\Omega \pm 5\%$)	Max VSWR	Accuracy $\pm \Delta\alpha$ (dB)	A (mm)
46-0013S	2	2	3	50	1.20	0.3	0.635
40-0336S	3	2	3	50	1.20	0.3	0.635
46-0008S	6	2	3	50	1.20	0.3	0.635
46-0009S	10	2	3	50	1.20	0.5	0.635
46-0014S	20	2	3	50	1.20	0.6	0.635
46-0022S	30	2	3	50	1.20	0.8	0.381

mm	inch
0.175	0.007
0.381	0.015
0.635	0.025
0.8	0.031
2	0.079
2.1	0.083
3.45	0.136
6.35	0.250

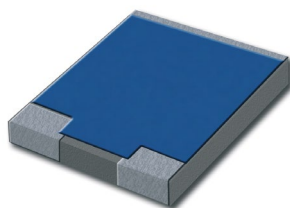
* Others values on request

Available on Tap and Reel Packaging

10 W 3.5 GHz AIN

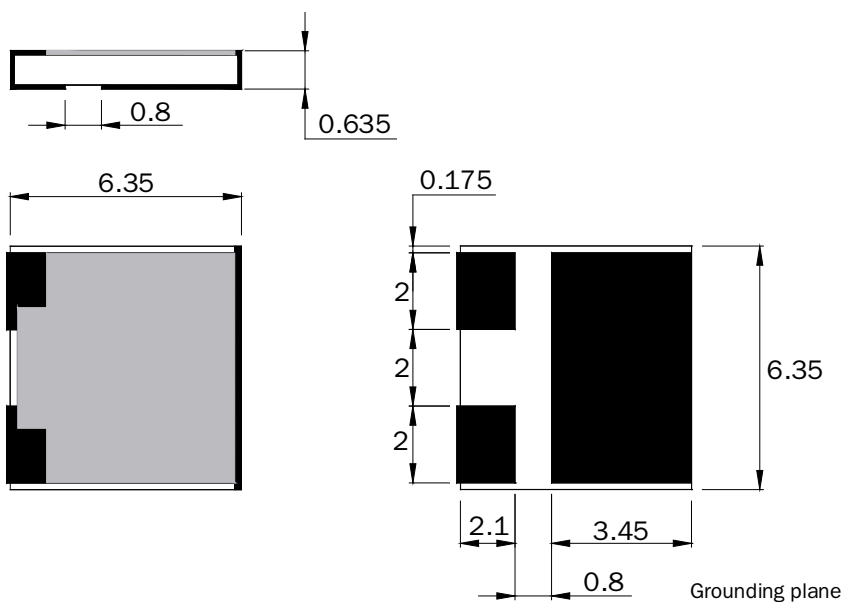
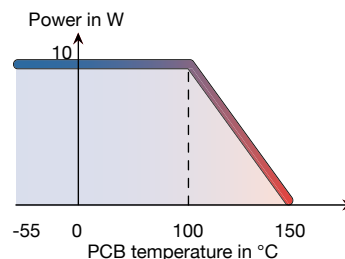


Standards
NF C 96-315
MIL-DTL-3933



SMD Attenuators

Substrate	AIN
Resistive film	Thick film
Protection film	Epoxy
Contacts finition	Tin over Nickel barrier
Size	2525



Dimensions in mm

[Return to Search by Part Number](#)

P/N	Attenuation* (dB)	Frequency (GHz)	Power (W)	Impedance ($\Omega \pm 5\%$)	Max VSWR	Accuracy $\pm \Delta\alpha$ (dB)
45-0022S	0.5	3.5	10	50	1.25	0.2
45-0021S	1	3.5	10	50	1.25	0.2
45-0023S	2	3.5	10	50	1.25	0.3
45-0076S	3	3.5	10	50	1.25	0.3
45-0077S	4	3.5	10	50	1.25	0.3
45-0039S	8	3.5	10	50	1.25	0.6
45-0064S	10	3.5	10	50	1.25	0.6

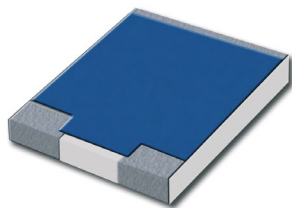
mm	inch
0.175	0.007
0.635	0.025
0.8	0.031
2	0.079
2.1	0.083
3.45	0.136
6.35	0.250

* Others values on request



Available on Tap and Reel Packaging

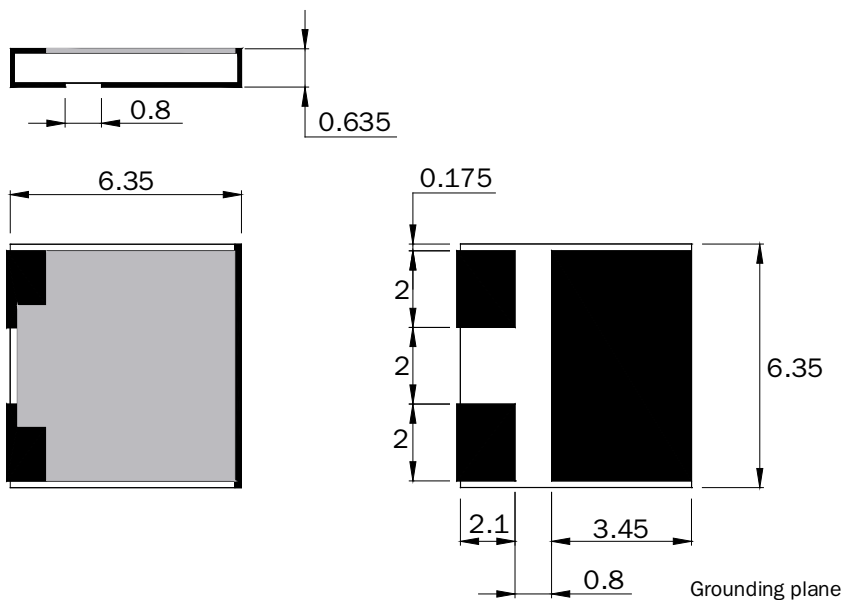
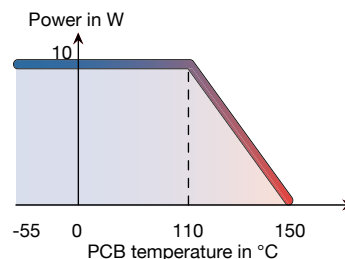
10 W 3.5 GHz BeO



Standards
NF C 96-315
MIL-DTL-3933



Substrate	BeO
Resistive film	Thick film
Protection film	Epoxy
Contacts finition	Tin over Nickel barrier
Size	2525



Dimensions in mm

SMD Attenuators

[Return to Search by Part Number](#)

P/N	Attenuation* (dB)	Frequency (GHz)	Power (W)	Impedance ($\Omega \pm 5\%$)	Max VSWR	Accuracy $\pm \Delta\alpha$ (dB)
43-0235S	1	3.5	10	50	1.25	0.2
43-0238S	2	3.5	10	50	1.25	0.2
43-0237S	3	3.5	10	50	1.25	0.3
43-0239S	6	3.5	10	50	1.25	0.3
43-0326S	8	3.5	10	50	1.25	0.3
43-0240S	10	3.5	10	50	1.25	0.3

mm	inch
0.175	0.007
0.635	0.025
0.8	0.031
2	0.079
2.1	0.083
3.45	0.136
6.35	0.250

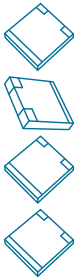
* Others values on request

Available on Tap and Reel Packaging

Search by Part Number

SMD Attenuators

Part Number	Page
40-0336S	13
43-0235S	15
43-0237S	15
43-0238S	15
43-0239S	15
43-0240S	15
43-0326S	15
45-0021S	14
45-0022S	14
45-0023S	14
45-0039S	14
45-0064S	14
45-0076S	14
45-0077S	14
46-0008S	13
46-0009S	13
46-0013S	13
46-0014S	13
46-0022S	13





Notes



