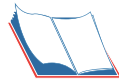
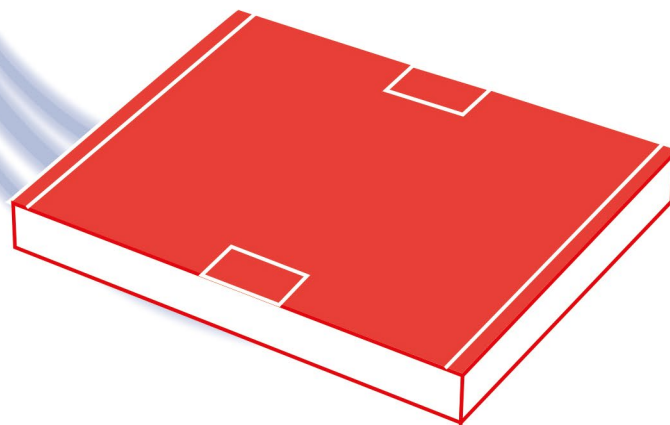


# CHIP ATTENUATORS



=> [Search by Part Number](#)



## For Power Amplifiers, Couplers, Combiners & Isolators

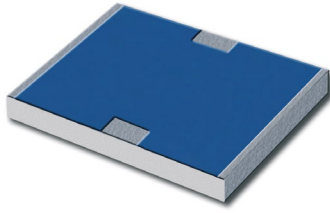
- ⇒ Easy Soldering on Base Plate
- ⇒ Size 3523 to 3737
- ⇒ 50 to 200 W
- ⇒ Up to 3 GHz

50 W 3 GHz BeO	3
100 W 3 GHz AlN	4
200 W 2.2 GHz AlN	5
Search by Part Number	6
Notes	7

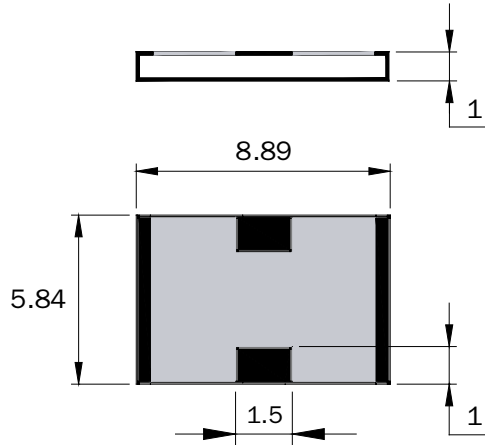
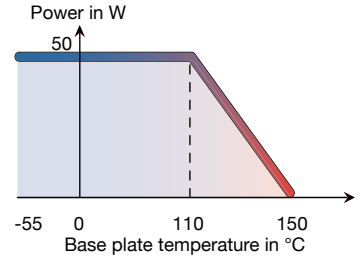


# 50 W 3 GHz BeO

Standards  
NF C 96-315  
MIL-DTL-3933



Substrate	BeO
Resistive film	Thick film
Protection film	Epoxy
Contacts	PtAg
Size	3523



Dimensions in mm



[Return to Search by Part Number](#)

P/N	Attenuation* (dB)	Frequency (GHz)	Power (W)	Impedance ( $\Omega \pm 5\%$ )	Max VSWR	Accuracy $\pm \Delta\alpha$ (dB)
43-0107	1	3	50	50	1.25	0.6
43-0108	2	3	50	50	1.25	0.6
43-0062	3	3	50	50	1.25	0.6
43-0061	6	3	50	50	1.25	0.6
43-0060	10	3	50	50	1.25	0.6
43-0105	15	3	50	50	1.25	1
43-0059	20	3	50	50	1.25	1
43-0058	30	3	50	50	1.25	1.2

mm	inch
1	0.039
1.5	0.059
5.84	0.230
8.89	0.350

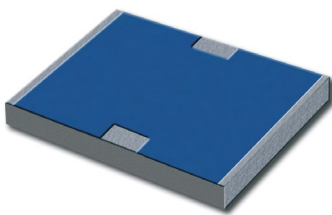
\* Others values on request

Available on Tap and Reel Packaging

# 100 W 3 GHz AIN

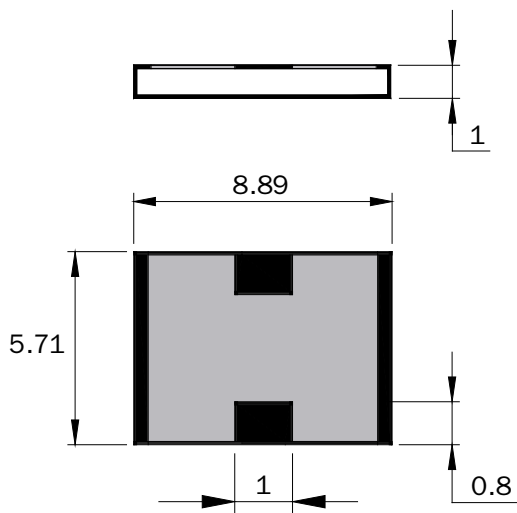
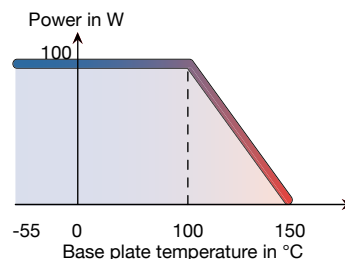


Standards  
NF C 96-315  
MIL-DTL-3933



Chip Attenuators

Substrate	AIN
Resistive film	Thick film
Protection film	Epoxy
Contacts finition	Silver over Nickel barrier
Size	3523



Dimensions in mm

[Return to Search by Part Number](#)

P/N	Attenuation* (dB)	Frequency (GHz)	Power (W)	Impedance ( $\Omega \pm 5\%$ )	Max VSWR	Accuracy $\pm \Delta\alpha$ (dB)
45-0044Y	20	3	100	50	1.20	0.5
45-0067Y	25	3	100	50	1.20	1.5
45-0043Y	30	3	100	50	1.20**	1.5***

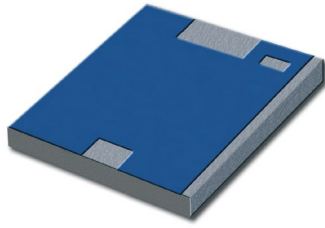
mm	inch
0.8	0.032
1	0.040
5.71	0.225
8.89	0.350

\* Others values on request  
\*\* VSWR  $\leq 1.20$  at 2.5 GHz  
\*\*\*  $\pm \Delta\alpha$  (dB)  $\leq 1.5$  at 2.5 GHz

Available on Tap and Reel Packaging



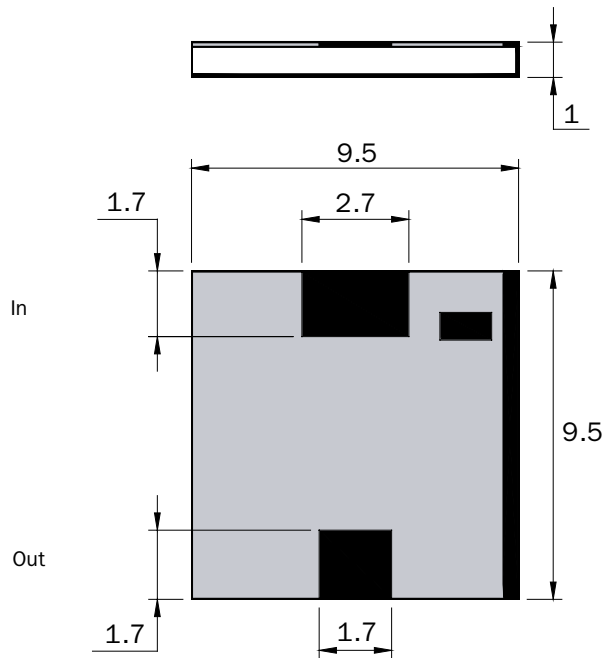
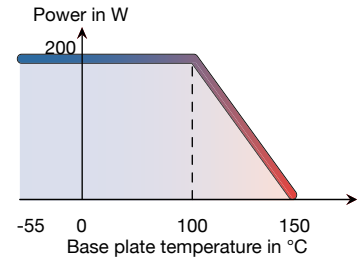
# 200 W 2.2 GHz AIN



Standards  
NF C 96-315  
MIL-DTL-3933



Substrate	AIN
Resistive film	Thick film
Protection film	Epoxy
Contacts finition	Silver over Nickel barrier
Size	3737



Dimensions in mm

Chip Attenuators

[Return to Search by Part Number](#)

P/N	Attenuation* (dB)	Frequency (GHz)	Power (W)	Impedance ( $\Omega \pm 5\%$ )	Max VSWR IN	Accuracy $\pm \Delta\alpha$ (dB)
45-0016Y	30	2.2	200	50	1.20	1.5

mm	inch
1	0.039
1.7	0.067
2.7	0.106
9.5	0.374

\* Others values on request

Available on Tap and Reel Packaging

# Search by Part Number

## Chip Attenuators

Part number	Page
<a href="#">43-0058</a>	J3
<a href="#">43-0059</a>	J3
<a href="#">43-0060</a>	J3
<a href="#">43-0061</a>	J3
<a href="#">43-0062</a>	J3
<a href="#">43-0105</a>	J3
<a href="#">43-0107</a>	J3
<a href="#">43-0108</a>	J3
<a href="#">45-0016Y</a>	J5
<a href="#">45-0043Y</a>	J4
<a href="#">45-0044Y</a>	J4
<a href="#">45-0067Y</a>	J4





# Notes



